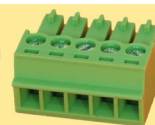


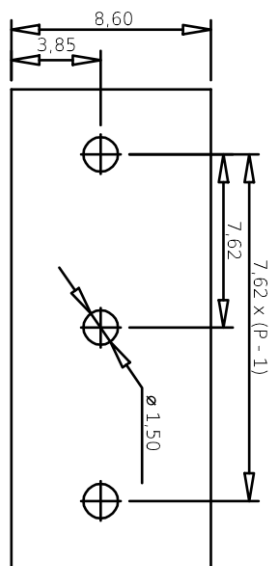
CONMATE®

Gute Verbindung
Gute Preise



CONMATE® PCB Connectors

LP/7,62/Px1/90G – 2012106112PP

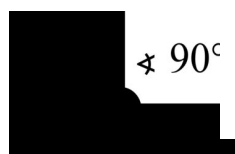
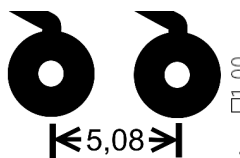


450 V

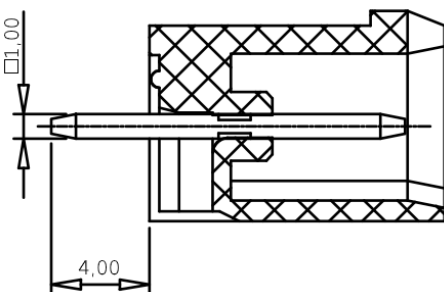
EN 60998

20 A

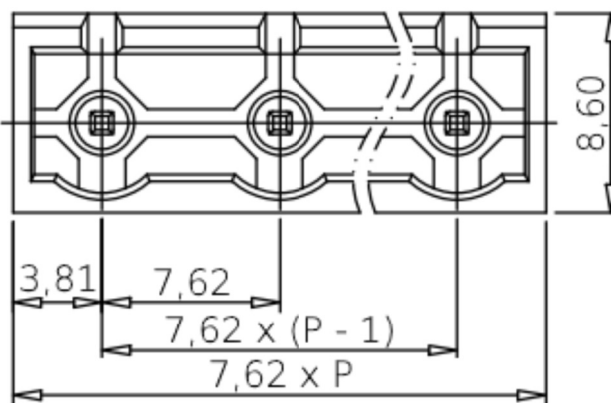
EN 60998



PCB - Socket



P = Number of poles



General Data:

Product line	CONMATE®	Product designation	LP/7,62/Px1/90G
Product type	PCB header	Type of contact	Pin
Grid dimension	7,62 mm	Poles (P)	2 – 16
Levels	1	Orientation	90°
Option	Closed side		

Stand: 05/2018; Änderung vorbehalten, Right of modification reserved, Sous réserve des modifications

CONMATE®
Forchheimer Str. 4
91338 Igensdorf - Germany
Tel.: +49 – (0) 9192- 995314 / Fax: 995268

www.conmate.de
info@conmate.de
Onlineshop:
www.conmate.de



Materials

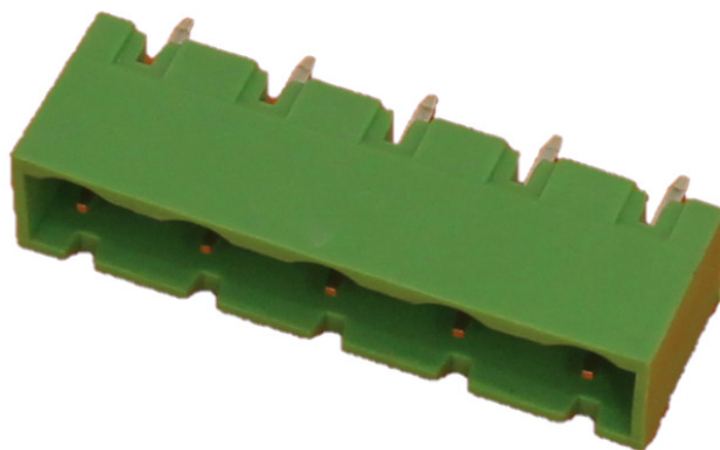
Matrix	PA	Colour	Green
Insulating material group	1	Insulation resistance	$> 10^{12} \Omega$
CTI	> 600	Flammability rating	V-0 according to UL 94
Contact material	Phosphate-Bronze	Contact surface area	tin-plated
Rated surge voltage	2500V~ / 1 Min.	Max. rel. humidity at 20 °C during storage	80%
Min. temp.	-25 °C	Max. temp. storage	55 °C
		Max. temp. in use	100 °C
Mating cycles	25		

Rated data UL *) Note the De-Rating curves

Rated current	20 A	With voltage	300 V~
Min. clearance	2,4 mm	Min. creepage distance	2,4 mm

Rated data IEC *) Note the De-Rating curves

Rated current	20 A	With voltage	450 V~
----------------------	------	---------------------	--------



Stand: 05/2018; Änderung vorbehalten, Right of modification reserved, Sous réserve des modifications

CONMATE®
Forchheimer Str. 4
91338 Igensdorf - Germany
Tel.: +49 – (0) 9192- 995314 / Fax: 995268

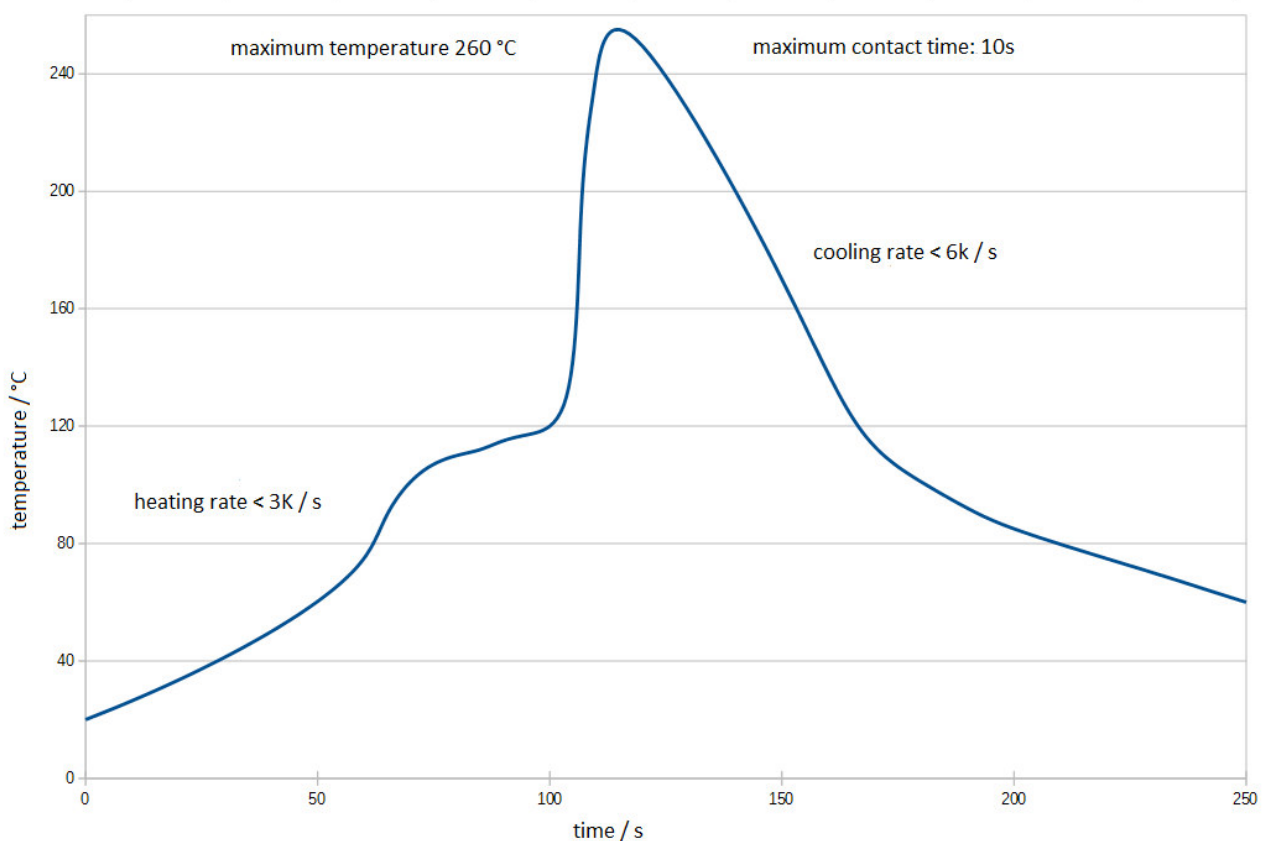
www.conmate.de
info@conmate.de
Onlineshop:
www.conmate.de



Mounting data

Pin Shape	Rectangular	Pin Size	1,0 mm x 1,0mm
Thread in the screw flange	M 2,5	Hole diameter	∅ 1,5 mm

Typical wave soldering profile with the process limits of CONMATE ® PCB headers.

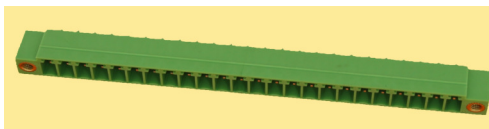


Through the process limits of other parts on the board, the general process limit can be further narrowed down. Other adjustments are possible by differences in the PCB and the type of part placement. Longer duration above the maximum permissible temperature leads to rapid aging of parts.

Stand: 05/2018; Änderung vorbehalten, Right of modification reserved, Sous réserve des modifications

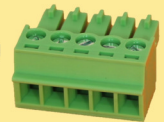
CONMATE®
 Forchheimer Str. 4
 91338 Igensdorf - Germany
 Tel.: +49 – (0) 9192- 995314 / Fax: 995268

www.conmate.de
 info@conmate.de
 Onlineshop:
 www.conmate.de



CONMATE®

Gute Verbindung
Gute Preise



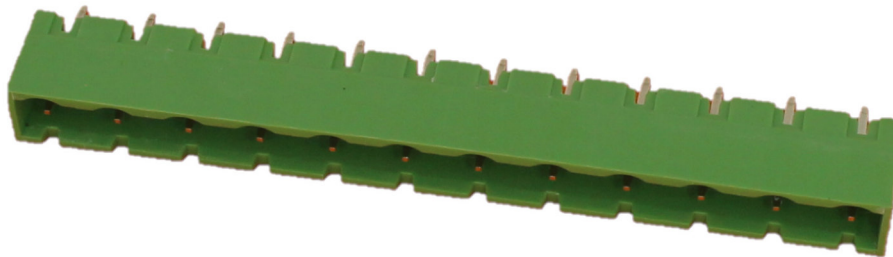
How the Article number for PCB connectors is formed:

20	1	X	X	X	X	X	X	X	XX
Plug connection	PCB	1 = Plug 2 = Header	1 = Pin 2 = Socket	0 = Header 1 = Screw 2 = Push/In 3 = Frontal	2 = 3,5 mm 3 = 3,81 mm 4 = 5,00 mm 5 = 5,08 mm 6 = 7,62 mm	1 = 1 level 2 = 2 levels	1 = 90° orientation 2 = 180° orientation 3 = 270° orientation	0 = Standard version 1 = Screw flange 2 = Closed sides 3 = Open sides	Pole number (always 2 digits)

E.g.: 201121311120: Plug connection-PCB-Plug-Socket-Screw-3,81mm-1 level-90° orientation-Screw flange-20 poles
201210412314: Plug connection-PCB-Header-Pin-header-5,00 mm-1 level-180°orientation-Open sides-14 poles

How the designation for PCB headers is formed:

LP	/	X,XX	/	XX	x	X	/	X	X
Header with pins									
Grid dimensions									
Pole number (always 2 digits)									
Number of levels									
Orientation of the PCB connector to the plug direction (90° or 180°)									
Options (Standard versionn, F for screw flange, G for closed sides or O for open sides)									

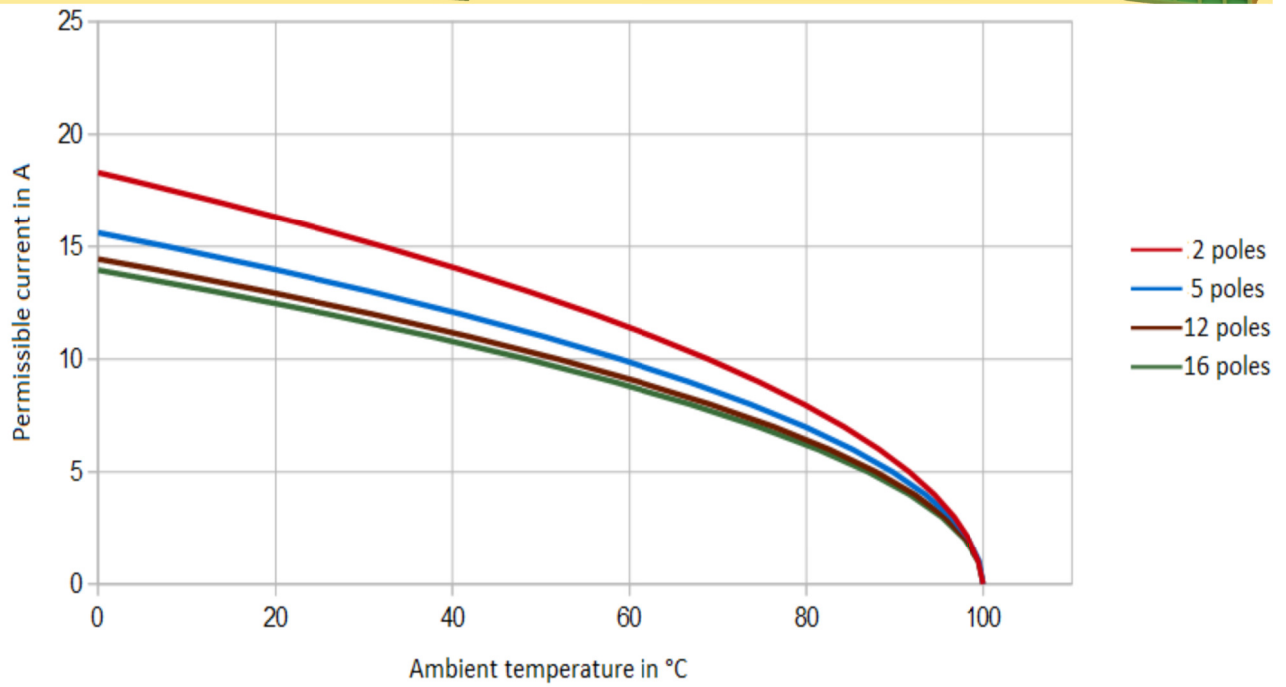


The following De-Rating curves show the permissible electric current at a given surrounding temperature in relation to the number of poles in the connection. The given amperage is applied on all poles. The horizontal border equals the maximum amperage of the certification.

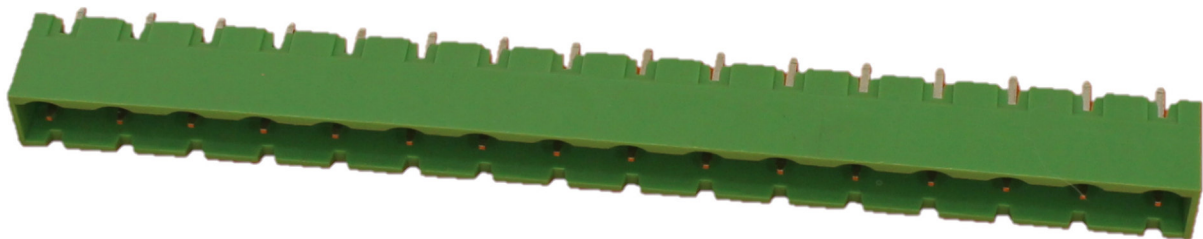
Stand: 05/2018; Änderung vorbehalten, Right of modification reserved, Sous réserve des modifications

CONMATE®
Forchheimer Str. 4
91338 Igensdorf - Germany
Tel.: +49 – (0) 9192- 995314 / Fax: 995268

www.conmate.de
info@conmate.de
Onlineshop:
www.conmate.de



De-Rating curves for the combination of SBS/7,62/Px1/180 and LP/7,62/Px1/90G



Stand: 05/2018; Änderung vorbehalten, Right of modification reserved, Sous réserve des modifications

CONMATE®
 Forchheimer Str. 4
 91338 Igensdorf - Germany
 Tel.: +49 – (0) 9192- 995314 / Fax: 995268

www.conmate.de
 info@conmate.de
 Onlineshop:
 www.conmate.de